



## Chapter Meetings

Chapter meetings are held on the third Thursday of each month from September through May.

Morning and evening meetings are held in-person unless a Zoom meeting is required.

Morning meetings begin at 10:00 am.  
Evening meetings begin at 6:30 pm.

Stitch-ins are held from June through August and usually held in-person.

## CALENDAR OF EVENTS

### Thursday, March 17

Zoom Meeting

*Morning Meeting – 10:00 am*

*Evening Meeting - 6:30 pm*

### Saturday, April 9

Board Meeting

*Via Zoom at 10am-12pm*

### Thursday, April 21

*Speaker at Home of Judy Lewis*

*Evening Meeting only*

### Sunday, April 24

*Spring Retreat at Sign of The Arrow*



## President's Letter, March 2022

Hi Stitchers,

I sit here at the end of February writing this Newsletter and wondering how everyone is doing in St. Louis and the surrounding areas. Last night was another ice/snowstorm and places are closed for safety reasons. On the other hand, I am trying to get my articles done so I can go outside and enjoy this incredible 80 degree and sunny day. So, with this being said, I am sure you are getting a lot of stitching done today. I have been working daily on my needlepoint and am making some headway on projects that I brought with me. Yes, I did stitch on the 2 ½ days in the car here, 2 trips to Miami (helping an aunt pack who is moving back to STL) and one trip to Naples to visit friends for 24 hours. I know I over-packed needlepoint projects, however, I have great ambition to get lots of items finished while I am here

I hope all of you who read Facebook have noticed that Jane Normile and I have been working on our social media presence lately. I would like to thank those who have looked at our posting or have commented on it. If you want something you want to post, put it on our site and it should be approved daily so all can see. If you want to post something, put it on our site and if it is relevant, it will be approved within a day. This will make it available to all who visit the site. Please note that this site is for Needlepoint only and not for recipes, dining, for sale items etc. However, if you are in need of a thread or something else, we are more than happy to post.

We are trying to keep our members engaged in our Guild at this trying time. I am happy to say that the February Zoom call in the morning had a great attendance. The board has spoken about how we can keep you all interested in our meetings since meeting in person seems to be a challenge. We all do understand the many reasons for not meeting in person. Hopefully this will change for April. With this all being said, what would you like us to do for the March Zoom meeting? Please don't hesitate to send me an email or give me a call so we can talk about it.

(continued on next page)

(continued from previous page)

This is your guild, and we want you to get the most out of it. We know your time is valuable and we would like to hear from you.

Coming up in March, we will have a Committee Chair for New Officers. I want to thank everyone who has served on the board with me over the last three years. Please note that there are some positions that are coming open and we will create a slate. If you are interested in one of these roles, please contact anyone on the Board. Our current officers are more than happy to assist you when take over a position. Please consider joining the Board and volunteering for one of the following:

Programs, Public Relations, Newsletter, Treasurer

Your board has been working hard to maintain your interest and support you over the last few years. We do appreciate you staying with us during this trying time. On a positive note, we are excited for two classes being offered in June with Diane Herrmann. I hope a lot of you will remember to sign up by March 10th. If you have questions about this event, please contact Stephanie Hornsby at [rghsfh@sbcglobal.net](mailto:rghsfh@sbcglobal.net).

Happy Stitching,

Judy Lewis, President



## Gateway Chapter of ANG Board Meeting

Saturday, April 9<sup>th</sup>  
10 am – noon  
Via ZOOM

***All members of this chapter are invited to attend. You will be notified about the Zoom details. Plan to join us.***

# VOLUNTEER



To further our mission of education, we continue to teach beginning needlepoint on the first Saturday of the Month at **The Needlepoint Clubhouse** classes run from 9 am until about 11 am?

We now have been asked by **The Sign of The Arrow** to teach a beginning class for them. (A day and time have not been decided at this time)

Currently Jane Normile has been leading these classes and would love some assistance. You need not assist every month, or you can share the duties with her. The more the merrier.

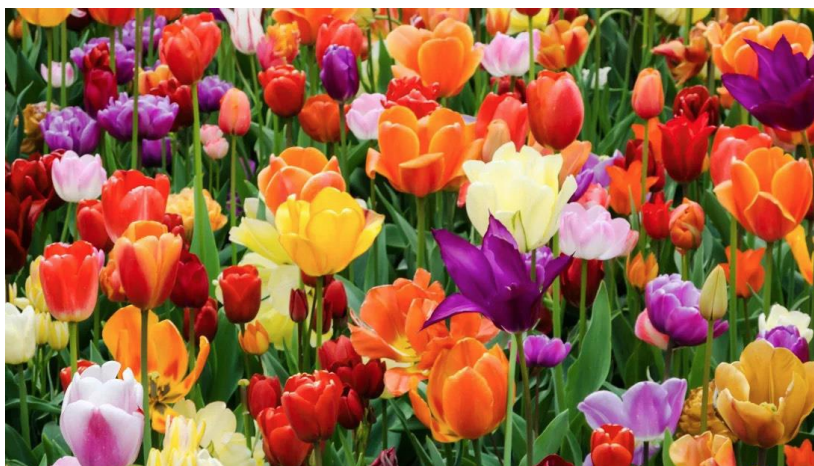
It is important for us to outreach in order to gain new members for our chapter and share our love of needlepoint.

Please contact Jane Normile:

Phone: 314.314.8690 or email [jane123normile@gmail.com](mailto:jane123normile@gmail.com)



## Let's Think Spring



**Sign of the Arrow  
Sunday, April 24**

Mark your calendars for the Gateway ANG Spring Retreat at Sign of the Arrow on Sunday, April 24th. Watch your email for registration and details. Plan on attending a fun afternoon of stitching and reconnection with friends.

## Spring Gateway Chapter ANG Programs



March will be another zoom meeting for the guild. Bring a piece of canvas that is 8x8 with a 4-inch square drawn in the center. Think happy spring colors and dig into your stash. Draw a 1-inch border inside the square and think of at least one new stitch that you would like to share and try.

It's your decision how you stitch this square. There will be an example on the zoom. Bring the completed square to the April meeting and join in for the prize drawing.

Yes, we plan to meet in person in April. Our plan at this time is to ask Greg, a fantastic framer from Michael's, to present framing program. It will be an "evening only meeting" at Judy's home on April 21<sup>st</sup>, so mark your calendar now.

One more event that is in the planning stages is our end of the year luncheon. Follow the Facebook page and emails for updates.

## COME STITCH WITH US!!



### Diane Hermann Weekend



(Walking the Water's Edge)



(Mayan)

**All kit fees MUST be paid by March 10<sup>th</sup>.**

Members of the Gateway Chapter may purchase the kit without attending the class (kit fee is the same!)

Contact Stephanie at: [rghsfh@sbcglobal.net](mailto:rghsfh@sbcglobal.net) if you are interested in "ghosting" either project.

## Walking the Water's Edge



### 1-Day Canvas Course Description

Are you dreaming of a vacation? Imagine a leisurely walk along a sunny beach, the waves washing up on the sand to expose a starfish. In this intermediate class, you will learn how to use a Florentine Stitch pattern and shading techniques with floss to create the line of a wave on a beach. Freeform eyelet stitches will mimic the foamy edge of the wave. You will use beads to add some sparkle to the water, and select a color to create a starfish on the shore.

This class is for the intermediate stitcher who wants to learn how to use floss to produce subtle shading, and to experiment with freeform eyelet stitching. We will include instructions on how to add some beads to the foam to give a sunny sparkle to the wave. As a finishing touch, you will learn the Bullion Knot Stitch to place a starfish on the shore.

Separating and laying strands of thread, we will discuss how to use different colors and numbers of strands of floss to create shading in a Florentine Stitch pattern. After practicing a number of stitches from the Eyelet family, we will learn how to create our own eyelet stitches and place them in a freeform pattern. Attaching beads and using the Bullion Knot Stitch to make a starfish will add interest to the piece. A discussion of options for finishing your work will complete the course.

**Class Technique:** Canvas

**Length of Class:** One day

**Level of Proficiency:** Intermediate

**Design Area:** 8 in. wide x 8 in. high

**Ground Fabric:** 18-count vintage canvas, eggshell

**Kit Cost:** \$60

## Mayan Lightning



### 1-Day Canvas Course Description

Bright and bold, the rich tradition of Guatemalan textile design combines traditional Mayan icons with explosions of color to create stunning woven fabrics. In this intermediate piece, you will use woven stitches to form a Mayan zigzag pattern symbolizing the energy-giving lightning bolt. Learning the Herringbone Stitch, Waffle Stitch, Sprat's Head Stitch and Point de Tresse Stitch, you will have an opportunity to understand how these woven stitches are constructed. We will include variations of these stitches to show the impact of subtle differences in color and composition.

The impact of bright colors on the black background will make you want to do more with this eye-popping combination. We will have helpful tips and suggestions for achieving success with black canvas and rayon floss so that you have confidence in selecting them for other projects.

We will provide guidance in compensating stitches, and in turning or mitering corners in a border design. In the last part of the class, the teacher will give instructions and options for finishing the piece.

**Technique:** Canvas

**Length of Class:** One day

**Level of Proficiency:** Intermediate

**Design Area:** 6 in. wide x 4 in. high

**Prerequisites:** Familiarity with common needlepoint stitches, terms, and techniques

**Kit Cost:** \$50.00

# VOLUNTEERS

It is that time of year when our members volunteer for a chapter role: Officer or Standing Committee Chair. We have four officers and two Standing Committee Chairs open. We also need volunteers to serve on a Nominating Committee, and we have a vacancy for an office, *Fundraising*. Please consider giving!

## A Nominating Committee

Nominating Committee leads the nomination process for the four offices and are appointed by the Board of Directors. This committee is composed of three members from our membership. Contact Judy Lewis If you would like to volunteer for the nominating committee. This is a short-term responsibility for March and April.

## B OFFICERS

Our chapter has eight officers and each officer serves a term of two years. We are voting for four offices this year: Programs, Newsletter, Public Relations, and Treasurer.

The Nominating Committee will submit one name for each office at the March 18<sup>th</sup> meeting. If you are interested in volunteering for any of these offices, contact the nominating committee. Volunteering is supporting our chapter!! Voting for officers is on April 21. Additional nominations are acceptable from the floor.

## C Fundraising Vacancy

**Fundraising Chapter Officer Open** – One year is left for this office. Official duties begin at May meeting. Submit your interest to any Board Member. Contact members Suzanne Nielsen or Margaret Orend for more information about **Fundraising**. Refer to specific responsibilities on the website under Bylaws and Standing Rules.

## D Standing Committees

Chairman is appointed by the President, Judy Lewis. This is a single year and it runs from August 1 through July 31. Chairs are Workshops and Philanthropy.



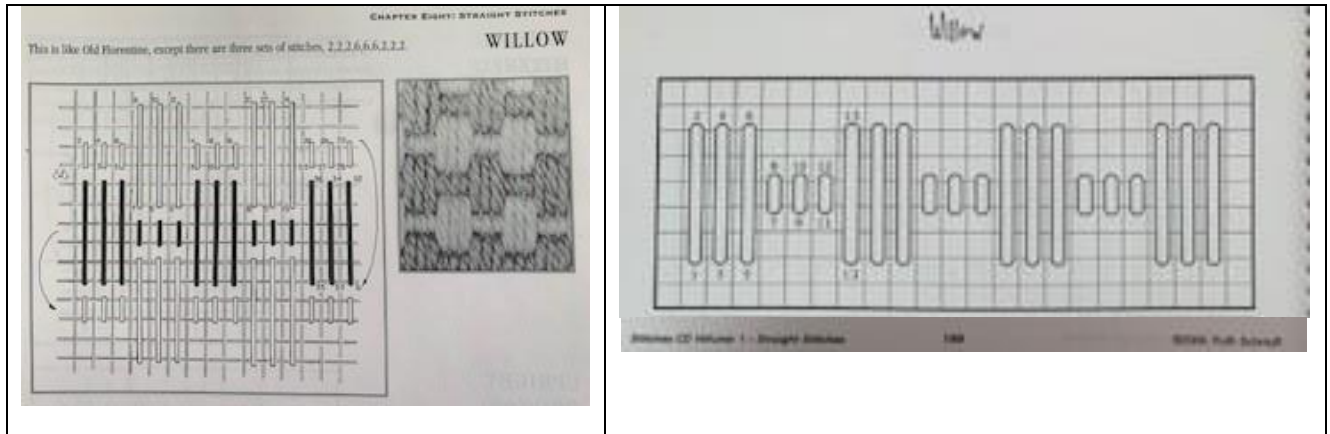
# Stitches

## Willow

**“Which stitch” is holding you back from stitching???** You are not sure which stitch to use because there are so many!! Well, here is an article that can help you with selecting your stitch.

The **Willow** stitch has been around a long time, long enough to be in the “revised copy of *The Needlepoint Book*” by the author, Jo Ippolito Christensen. Jo Ippolito Christensen first published *The Needlepoint Book* in 1976. Her revised copy came out in 1999. In the revised copy, Willow is found in the eight-chapter and listed as a Straight Stitch. *This is like Old Florentine, except there are three sets of stitches, 2, 2, 2, 6, 6, 6, 2, 2, 2.* This stitch can be used for many variations. Reducing the count of stitches, might change it to Old Florentine with an entirely different look.

This stitch is good for roofs, buildings, patterned backgrounds and could also be used as an option for an open background if you match colored threads to the painted canvas. As with the Scotch stitch, this would work for silk threads but not floss. To give the best effect, choose a needlepoint yarn that comfortably fills the holes, and try not to leave too much bare canvas showing.



**Stitches CD Volume 1 – Straight Stitches** – The *Stitches, Volume One* book compiled by Ruth Schmuft and Kathy Holicky has also listed **Willow** as a straight stitched option

---

*There are a lot of needlepoint shops, needlepoint teachers and needlepoint authors that can provide additional knowledge on how to use each stitch. To learn more, contact your local shops, check YouTube, join an online stitching club or contact a member of our chapter!! Help is always available.*

# American Needlepoint Guild



After careful consideration, the ANG Board of Directors has decided to move forward with a change in how our annual dues will be paid. Beginning in January 2022, all membership dues will be paid on an annual basis, in January. This applies to all memberships of 1, 2, 5 and 10 years duration and in all countries. If your membership renewal date is between October and December 2021, please pay your annual dues as usual. In 2022, all membership dues will be paid in January, and will be prorated to account for the new annual schedule.

This change will provide benefits to ANG in reducing the time and effort spent in managing the dues renewal process, providing more timely information for budgeting purposes, and simplifying the membership verification process for chapters.

Additional details will follow in our bi-weekly newsletters.

Best Regards,

Linda Rand  
President  
American Needlepoint Guild  
[President@needlepoint.org](mailto:President@needlepoint.org)

## REMINDER: CHANGE IN MEMBERSHIP LOCAL ANNUAL DUES

Affective January 1, 2022, American Needlepoint Guild (ANG) changed to an annual membership date for renewal for all of their members. As a local chapter, Gateway ANG decided to also change the membership renewal date to match with ANG. The dues payment date was Monday, January 31, 2022. This meant that all of our members should have paid their annual local chapter dues by January 31, 2022. This covers everyone's membership responsibility through the entire 2022 year. (Members who paid their dues in October, November, and December 2021, were not required to make a payment.)

This year, 2022 and this year only, the local dues payment is \$11:00. Our board decided to assist in smoothing the local dues process and wanted to give each member a part of dues payment back and to thank each member for holding on to their membership through these hard and unusual times due to Covid-19 restrictions.

Thank you for being a member! Contact me if you have any questions.  
Janice Marsh, Membership Chair

## MEMBERSHIP RENEWALS FOR NATIONAL ANG and GATEWAY CHAPTER

Membership renewals are due once a year by January 31 for both our national organization *American Needlepoint Guild* (ANG) and for our local chapter, *Gateway ANG Chapter*.

- Pay **ANG dues** online at [www.needlepoint.org](http://www.needlepoint.org). Look for the **red Renewal** link for easy processing. As an alternate, you can pay by mail using the paper ANG form, [National Membership Form](#).
- Pay local **Gateway Chapter dues** in January by mail to Janice Marsh, Membership Chair.

*If you have any questions about your dues, please contact Janice Marsh, Membership Chair.*

For following members, be sure to renew **both national ANG (\$52) and local Gateway Chapter** ~~(\$22)~~ **– but this year only \$11.**

- |                 |                       |                      |
|-----------------|-----------------------|----------------------|
| • Sondra Blau   | • Megan Holmes        | • Felicite H Pollnow |
| • Jennifer Chan | • Stephanie Hornsby   | • Judith Rau         |
| • Julie Cook    | • Deborah Jacobson    | • Carol Regan        |
| • Jean Dennis   | • Anne Jaques         | • Betty Rosenberger  |
| • Kathy Faries  | • Teddy Karl          | • Bridget Viehweg    |
| • Anne Freeman  | • Mary Carol Kluesner | • Lisa Weiss         |

**Pay ANG Dues by Check:** If you prefer to mail a check for ANG dues, send with the [ANG National Membership Form](#). This form includes information about your ANG renewal. It is available on the [Gatewayang.org](http://Gatewayang.org) website or from Janice Marsh, Membership Chair. Make your check payable to **ANG** and mail to 1120 Route 73 #200, Mount Laurel, NJ 08054-5113.

**Pay Local Chapter Dues by Check:** Make your local chapter dues check payable to Gateway Chapter ANG. Send your check to Janice Marsh, Membership Chair, 420 Brooktree Drive, Ballwin, MO 63011. If you have any questions, please contact Janice by phone- 636-394-1134 or email-membership@gatewayang.org.

**THANK YOU FOR RENEWING YOUR MEMBERSHIP!!**

## Please Help: Bring Personal Care Items

Our ANG Group for this year is trying to help those in need. Our project is to bring personal care items to our meetings. This can include shampoo, soap, razors, deodorant, hygiene items and even sample sizes are greatly appreciated. Please try to send a donation to our Judy Lewis.



## As seen on Facebook Finished

Hearts for Hospice



Jane Normile

Donating "Hearts for Hospice"

*Sending to "Greater Kansas City Needlepoint Guild" for finishing*

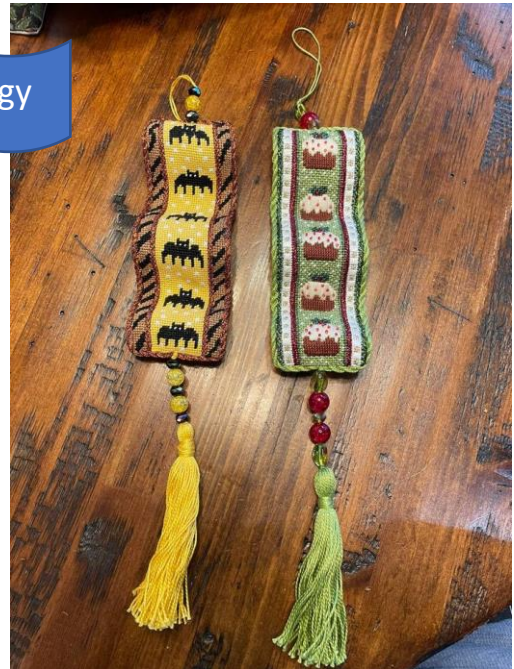
Jane Normile



Bridget Viehweg



Kathern Nagy



Hanna Evens



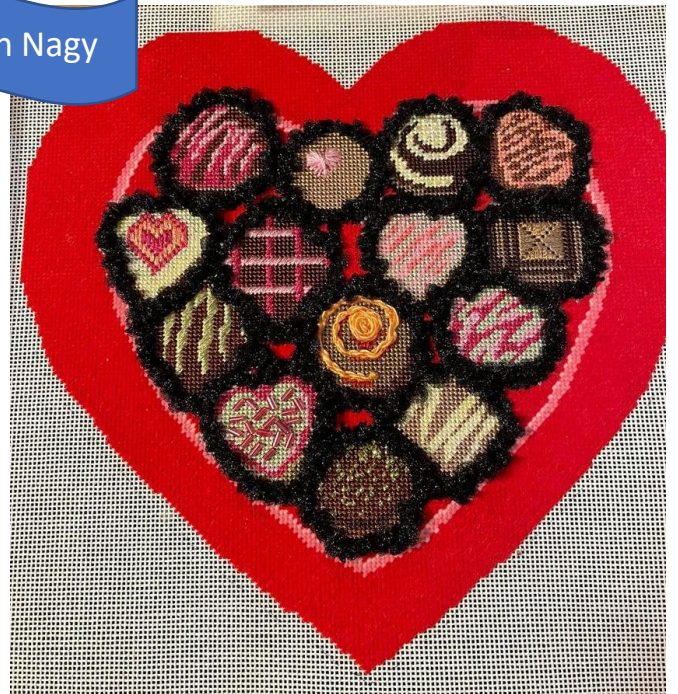
Kathryn Nagy



Cindy Lubbert



Kathryn Nagy



# As seen on Facebook Work in Progress (WIP's)

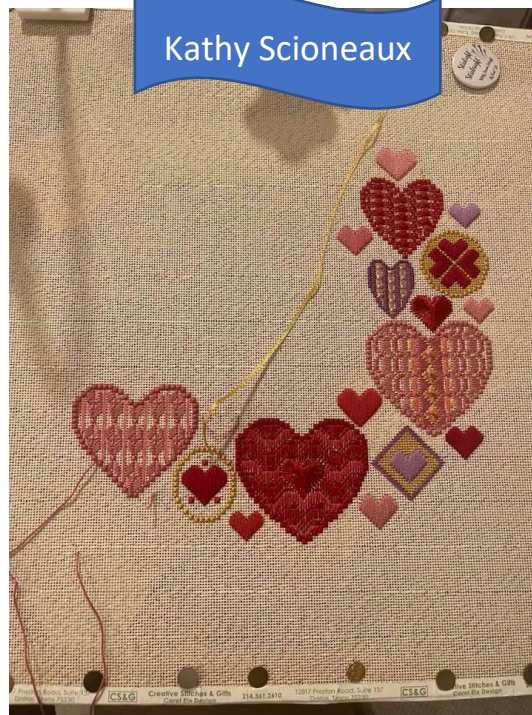
Jane Normile



Julie Cook



Kathy Scioneaux





# THE Needlepoint CLUBHOUSE

11208 Manchester Road, St. Louis, MO. 63122 | (314) 432-2555 | [needlepointclubhouse.com](http://needlepointclubhouse.com) | [@stlneedlepoint](https://twitter.com/@stlneedlepoint)

## GOOD LUCK BE YOURS



## MARCH TRUNK SHOWS

Eye Candy  
Susan Battle

## IT'S NOT TOO LATE...

### Pointing it Out 22 STITCHING GOALS FOR 22

- COMPLETE A SELF-FINISHING OBJECT
- USE A VARIEGATED THREAD
- COMPLETE A 2 PART STITCH (2 different kinds of thread)
- STITCH IN PUBLIC
- PLAY CANVAS ROULETTE
- BUY A NEW TOOL
- FINISH A WIP
- STITCH A NON-DECEMBER HOLIDAY PIECE
- USE A STITCH GUIDE
- STITCH A THREAD THAT IS NEW TO YOU
- STITCH A NAME OR INITIAL(S)
- ATTEND A CLASS
- STITCH FOR YOU
- BEAD IT!
- PARTICIPATE IN A STITCH-LONG (2 or more stitches)
- STITCH A WEARABLE (hat, purse, scarf, etc)
- STITCH AN OPEN BACKGROUND
- STITCH A SET (2 or more)
- STITCH AND SIP WITH A PAL
- INCORPORATE BARGELLO
- INSPIRED BY OR AS SEEN ON
- STITCH VERY PERI



## APRIL TRUNK SHOWS

Rebecca Wood  
Patty Mann

## UPCOMING CLUBS & CLASSES

A few spots left!

Patricia Sone, *Four Season Topiary Club*  
Register online.



April 23 - 25, 2022

Laura Taylor, *Patti Mann Project*

Join Laura as she takes us to this seaside paradise and shares her talent of bringing a canvas to life. Register online.



July 16 - 17, 2022

Mark Craddock, *Four Square Santa*

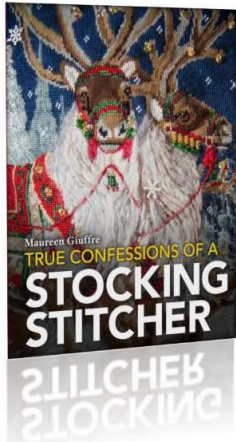
Mark is known for his clever approach to Santa beard-style stitches. His band director background will keep you so engaged and entertained that your fear of turkey work and bouillon knots will disappear! Online registration coming soon.



# SIGN of the ARROW

Benefiting charities since 1966

## Look What's New!



**True Confessions of a Stocking Stitcher** is a detailed account of stitching 18 realistic stockings and multiple Santa face ornaments comparing approaches (threads & stitches) to the many areas involved in creating a three dimensional scene. *Contains over 250 beautiful photographs.*

Find it ALL  
at  
SIGN of the ARROW!



The world is celebrating the Platinum Jubilee of Queen Elizabeth II and we have a terrific selection of new, British-inspired canvases awaiting your lovely stitch embellishments.

*"Long live the Queen!"*

## Trunk Shows



**MARCH**

**Burnett & Bradley**

Always - **20%** off all trunk show canvases, including special orders!

**Hurry in for best selection!**



**APRIL**

**A Poore Girl Paints**

9814 CLAYTON ROAD, ST. LOUIS, MO 63124

SIGNOFTHEARROW.COM · 314.994.0606 · CONTACT@SIGNOFTHEARROW.COM

## GATEWAY CHAPTER OFFICERS—BOARD

---

President Judy Lewis (314) 402-3197 president@gatewayang.org	1st Vice President-Programs Jane Normile (314) 313-8690 programs@gatewayang.org	2nd Vice President-Membership Janice Marsh (636) 394-1134 membership@gatewayang.org	Secretary Hanna Evens (314) 822-7368 secretary@gatewayang.org
Treasurer Kathy Scioneaux (314) 504-8784 treasurer@gatewayang.org	Newsletter Leigh Hullverson (314) 560-6188 newsletter@gatewayang.org	Fundraising Suzanne Nielsen & Margaret Orend (314)-560-4137 & (314) 773-2724 ways_means@gatewayang.org	Public Relations Ann Patterson (314) 707-1727 public-relations@gatewayang.org

## GATEWAY CHAPTER OFFICERS—COMMITTEE

---

Workshops Stephanie Hornsby (314) 422-1248 workshops@gatewayang.org	Webmaster Janice Marsh (636) 394-1134 webmaster@gatewayang.org	Sunshine <b>Position Open</b> sunshine @ gatewayang.org	Philanthropy Vicki Sauter (314) 878-3079 philanthropy@gatewayang.org
--	---	---	---

---

## NEWSLETTER

Needlenotes is published six (6) times a year—September, November, January, March, May, and July. The deadline for copy submission is the third Wednesday of the preceding month of the publication. Submit copy to Leigh Hullverson, Newsletter. (See phone number and email address above.)

## ADVERTISING RATES

Advertising rates apply to one year of Needlenotes publication of six (6) issues. Rates are \$30 for business card, \$60 for ¼ page, and \$80 for a ½ page. Submit camera-ready art to the same email address as the newsletter copy listed above.

©2022 Gateway Chapter American Needlepoint Guild. ANG chapters may reproduce for guild use only; others require written permission.

Needlenotes  
Gateway Chapter of ANG  
Leigh Hullverson  
9552 Clayton Rd.  
St. Louis, MO 63124