



---

## CHAPTER MEETING

Chapter meetings are held on the third Thursday of each month from September through May.  
Morning and evening meetings are held in-person at Ladue Chapel  
Morning meetings begin at 10:00 am.  
Evening meetings begin at 6:00 pm.  
Stitch-ins are held from June through August and usually held in homes.

---

## CALENDAR OF EVENTS

### Thursday, November 17

*No morning meeting*  
*Evening meeting: 6:00 pm*

### Tuesday, December 6

*Holiday Stitch-In*  
*Host: Judy Lewis*  
*Time: 1:00 pm to 9:00 pm*

### Thursday, January 19

*Only meeting: 1:00 pm*



## President's Letter, November 2022

Dear Stitchers,

I don't know about you, but the last two months have just zoomed by. How many ANG events did you attend? Or how many projects did you finish? Did you learn something new for your stitching?

I heard the September meeting was amazing. Thanks so much to Suzanne Nielson and Margaret Orend for running the meeting while I was in Colorado. (The wedding was so much fun, and I got to see friends and many relatives of the bride's family who also live out of town.)

Suzanne and Margaret gave their presentation on their new program for Halloween canvases. I have heard many rave reviews on the creativity and that at the October meeting, participants will learn how to finish the completed projects themselves. By the way did you also know this was a fundraiser? This meeting also was the kickoff for the Fall fundraiser for Pampered Chef. I hope you all had time to look at this opportunity to do a little shopping for yourself or select gifts for the holidays. They have had lots of new products since the last time we did this. The closing date for this fundraiser was October 31<sup>st</sup>. Thanks so much to Becky Lape and Suzanne Nielsen for putting this all together.

October 9th was our Fall retreat and it was held at The Needlepoint Clubhouse. A fun fall full day was had by all. So much talking, laughter and even some stitching!! Everyone who attended received a small goody bag and raffle prizes were drawn throughout the day. Thanks so much to Megan Holmes for letting us have our day in her shop. Eileen Chalk helped us out through the day and checked us all out with our new purchases. Suzanne Nielsen and Becky Lape, thanks for picking up the great treats to eat through the day. Finally, thanks so much to Jane Normile and Stephanie Hornsby for putting the day together.

Just a few days later we were off to the Fall Stich Away on October 16th-18th. I don't know about the others, but it took me a few days off and on deciding what to take with me for stitching. I may have packed my clothes in a small suitcase, but my supplies took up more space. A personal thank you to Nancy Feldman for driving Sandy Blau and me to

(continued on next page)

(continued from previous page)

the retreat. Thank goodness we had her SUV. We talked and laughed so much in the car that the road trip went very quickly. (Okay, it is only like an hour away but still it went fast.) From the minute we arrived and then got settled in our stitching area, it seemed like everyone was smiling ear to ear. It was so great to spend the next few days with stitching friends. We talked, laughed, and even learned a few new things. If you need a Turkey Work stitch, just ask Eileen Chalk. She taught Nancy Feldman a new way and Nancy was so excited about doing it on her project that she showed everyone. But Sandy Blau was the most excited about her amazing French Knots lesson. They were perfect. Again, thank you Eileen! If you have not been to one of these retreats in New Haven, you should think about going with us next time. A great time was had by all. We want to give a big thank you to Kathy Scioneaux and Eileen Chalk for making it an amazing three days.

What! Another ANG event this week? Can't be? Yes, it was our October meeting. I tried to make it a short meeting, (always hard to do for me) as everyone was anxious to finish their "cookie-cutter" September projects. For those members that missed the October meeting, we had a conversation and a vote to try having only one meeting in January and one meeting in February. This is a trial to see how it goes and then make a final decision to change from two meetings to one. For these meetings, we will continue to meet at Ladue Chapel, with the room opening at 12:30 pm and the meeting beginning at 1:00 pm. If you would like to stay and stitch or visit with others after the meeting, the room will remain open until 5:00 pm.

The final steps of the Halloween projects were completed and everyone was thrilled with how their pieces turned out. Look further in the newsletter to see some of the final pieces. By the way, all 40 sets were SOLD.

So now we are in November and we have our November meeting on the 17th. Our program is "Scissor Fob" and our guest speaker is only available for one meeting that day. Please note that our meeting is in Gulick Room at Ladue Chapel and will open at 5:30 pm and start promptly at 6:00 pm. We will forgo a business meeting. We have the room until 8:00 pm and we must be wrapped up on time.

December brings us a Holiday Stitch-In at my home on Tuesday, December 6th. Please remember to RSVP by Friday, December 2nd. Additional information is listed in the invite in this newsletter.

At this time, I would like to say that I am thankful for all my friends that I have made through ANG and wish all of you a wonderful Thanksgiving with friends and family.

Happy Holidays,  
Judy Lewis



## **BABY IT'S COLD OUTSIDE**

PLEASE HELP ANG COLLECT  
SOCKS & GLOVES

Bring to our events

November 17<sup>th</sup> & December 6<sup>th</sup>

Kids & Adult sizes are welcome

The Only Thing  
Standing Between  
Me & Finishing  
This Project  
**Are the 500 Other  
Ones I want to Start  
Yarnspirations**

(Can you relate with your stash?)



Please update in your roster  
the new email for: **Vicki  
Sauter**

Vicki.Sauter@gmail.com



# Holiday Stitch-In

Tuesday, December 6<sup>th</sup>

1 pm – 9 pm

Appetizers, Desserts &  
Snacks

Of course, drinks!

Judy Lewis's home

11549 Templar Drive

RSVP by December 2<sup>nd</sup>

57jlew@gmail.com or

314.402.3197



## Halloween Fundraising Project

The Programs Committee, in partnership with the Fund-Raising Committee, have had an extremely successful kick off to the 2022-2023 season of the Gateway ANG Chapter year. Suzanne, Margaret and Becky put in many hours to produce both a successful fundraiser and a very well received Halloween project. We only saw an incredible nine finished projects on Thursday but are looking forward to seeing many more! An extra kudo needs to be extended to *The Sign of the Arrow* for providing a generous discount on materials!

January and February programs are in the works. If anyone has future program suggestions, please feel free to contact us, Suzanne or Margaret. Our contact info is in the newsletter, we welcome new ideas.

Suzanne Nielsen and Margaret Orend, Programs &  
Becky Lape and Suzanne Nielsen, Fundraising





## Scissor Fob Project

The November meeting will only be an evening meeting at 6:00 pm. Our meeting room at Ladue Chapel opens at 5:30 pm and all members are invited. If you are not participating in the scissor fob project, feel free to come anyway and bring your stitching or just watch the unfolding of our scissor fobs!

Reminder for the lucky participants of the November Scissor Fob Program that already signed up: This meeting is scheduled to be in the Gulick Room. Enter Ladue Chapel through the left set of doors and proceed to your right all the way to the Gulick Room.

Please bring a neutral-colored small towel, washcloth, or kitchen towel so you have a place to lay your beads. This will help prevent you from hunting for your stray beads or crawling on the floor when they roll off the table.

Our meeting will start promptly at 6:00 pm. We will not have a business meeting or a presentation of prior minutes. We want to allow everyone to have maximum time to complete their fob. Ladue Chapel closes the building at 8:00 pm.

*I had a sneak peak of just a few of the beads that have chosen and they are fabulous! If you have a special bead in your stash that may work in your design, feel free to bring it and MAYBE it can be incorporated into your fob.*

Suzanne and Margaret, Programs



# Gateway Chapter ANG Third Stitch-Away Cedar Creek Conference Center, New Haven, MO Sunday, Monday and Tuesday, October 16, 17, 18



Where we spent every day – from 9:00 am to 10:00 pm!! There were 12 attendees and we laughed and learned a lot about each other and our stitching favorites!



Where we walked to our meals. It was an old saloon that had been refurbished!! It had a dance floor and a large bar. Our three meals a day were very good!! 😊



Where we ate every meal. It was a line-up type of serving. Take as much as you wanted. Desserts, orange juice, and bacon were some of the favorite choices.



Games were played every evening. Some of the questions were very hard ... about Missouri and about stitching! Suzanne was the big winner! Good for her!!!



# Stitches

## from *ANG Stitch of the Month 1998-November*

***Do you often question yourself ... "which stitch" should I use??? Are these questions holding you back from stitching??? Is it because there are so many stitches and you are not sure which stitch to use?? Well, here is an article that might help you with selecting your stitches.***

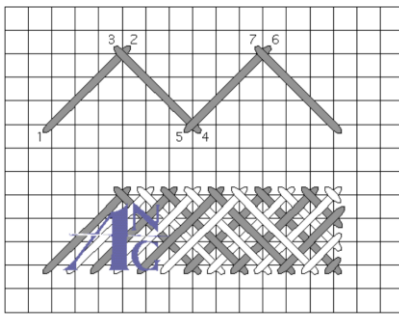
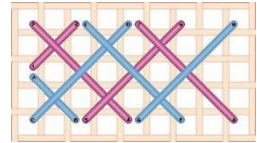
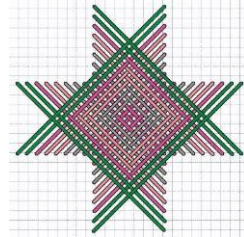
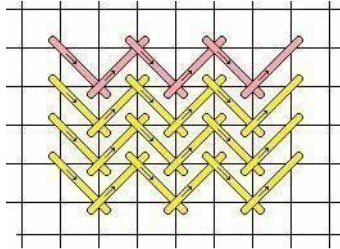
*This stitch of the month is by Beth Robertson.*

Herringbone stitch and its many variations are versatile stitches with a zigzag or crisscross effect. Use them for linear designs and borders, and to give an open effect when filling in large areas.

For a neat finish, try to make all the stitches the same length and slant the arms of the crosses at the same angle all the way along the row. Basic herringbone stitches make a lightweight zigzag line. You can work the stitches more closely for a crisscross effect.

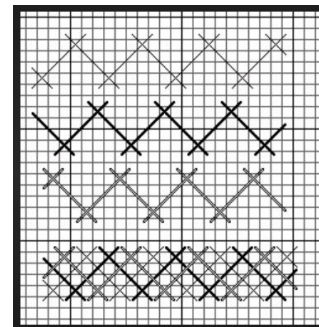
Double herringbone stitch gives a heavier line. It consists of a base row of basic herringbone stitch, with a second row worked over the top. You can use a second color for the top row for a decorative effect.

Herringbone can be used on linen material, for embroidery as well as needlepoint.



By Beth Robertson

This stitch can be worked vertically, horizontally, or as a border. It can also be worked in multiple trips using two to six different threads or thread colors.



Copyright ©EagleMoss Publications Ltd 2001 All rights reserved.

*There are a lot of needlepoint shops, teachers and authors that can provide additional knowledge on how to use each stitch. To learn more, contact your local shops, check YouTube, join an online stitching club or contact a member of our chapter!! Help is always available.*

## REMINDER: CHANGE IN MEMBERSHIP LOCAL ANNUAL DUES

Effective January 1, 2022, American Needlepoint Guild (ANG) changed to an annual membership date for renewal for all of their members. As a local chapter, Gateway ANG decided to also change the membership renewal date to match with ANG. Our dues payment date was Monday, January 31, 2022. This meant that all of our members would have paid annual local chapter dues by January 31, 2022. This covered everyone's membership responsibility through the entire 2022 year. (Based on timing of this announcement, local members who paid their dues in October, November, and December 2021, were not required to make a membership payment.)

This year, 2022 and this year only, our local dues payment has been \$11:00. [Our board wanted to smooth the local dues process and ask for your chapter dues to be paid only in January like it will be in January 2023.](#) Our chapter also wanted to give each member a part of the dues payment back and to thank each member for holding on to their membership through these hard and unusual times due to Covid-19 restrictions.

At this time, ANG membership renewals are still being pro-rated and their pro-rating payments will continue through the end of this year, December 31, 2022. Our Gateway Chapter started early with collecting our \$11.00 local dues in the first quarter of this year and 95% of our members have paid their dues!! THANK YOU SO VERY MUCH TO OUR MEMBERS!! Some of our members even paid the full \$22.00 dues from last year! They donated the extra money to our chapter and we really appreciated that. We look forward to applying our dues' receipts to our programs and classes.

### MEMBERSHIP RENEWALS FOR NATIONAL ANG

- **September 30 and October 31 for ANG:** J. Cook; M. Knutson
- **November 30 for ANG:** E. Ippolito; S. Lucco, G. Grigsby
- **December 31 for ANG:** D. Beaman, J. Filean, J. Normile, D. Trowbridge

**Pay ANG Dues by Check:** If you prefer to mail a check to ANG for your dues, send using the [ANG National Membership Form](#) available on the [Gatewayang.org](#) website or from Janice Marsh, Membership Chair. Please make your check payable to ANG.

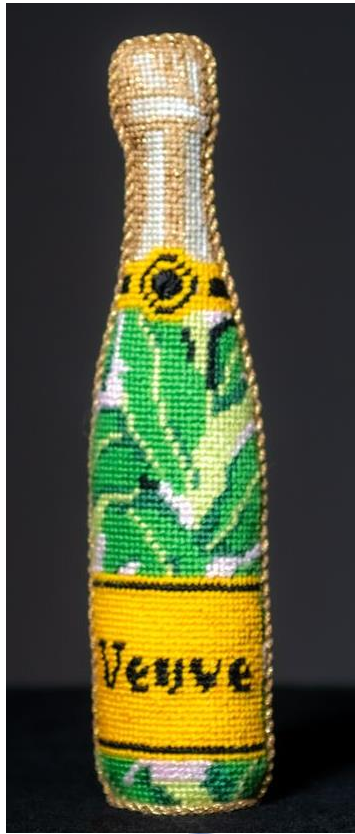
**Pay Local Chapter Dues by Check:** If you prefer to mail a check to our local chapter for your dues, send using your personal check payable to Gateway Chapter ANG. Please make your check payable to Janice Marsh, Membership Chair, 420 Brooktree Drive, Ballwin, MO 63011. |

If you have any questions,  
please contact Janice by phone at 636-394-1134 or email-[friends@gatewayang.org](mailto:friends@gatewayang.org).

**THANK YOU FOR RENEWING YOUR MEMBERSHIP!!**

## As seen on Facebook

Judy Lewis



Our Guest - Lisa



Kathryn Nagy



Mary-Carol Kluesner



Kathern Nagy



Ellen Ippolito



Donna Beaman



Margaret Orend



Hanna Evens



Kathy Scioneaux





11208 Manchester Road, St. Louis, MO. 63122 | (314) 432-2555 | needlepointclubhouse.com | @stneedlepoint



### NOVEMBER TRUNK SHOWS

Studio Midwest  
PLD Designs



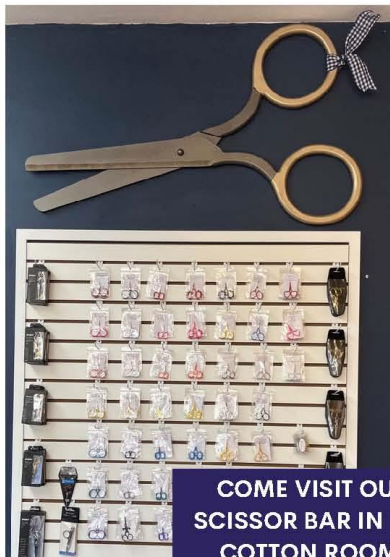
### **SO MANY NEW THINGS FROM FALL MARKET!**

Lots of new canvases including a huge  
selection from Jean Smith!



### DECEMBER TRUNK SHOWS

Chris Lewis  
Stitch Style



**COME VISIT OUR  
SCISSOR BAR IN THE  
COTTON ROOM!**



**Stitching in Season?**  
We have lots of options for  
Christmas and Hanukkah

# SIGN of the ARROW

Benefiting charities since 1966

## HAPPY HOLIDAYS FROM OUR "HOME" TO YOURS



### November Local Artists Trunk Shows - 20% Off

Kirkland Design Studio ~ KMT Originals ~ Genevieve ~ juju ~ Kits by Olivia ~ KJN Designs



### More Events!

- November Food Drive - Help a needy family when you donate to the St. Louis Area Food Bank AND earn one *Arrow Buck* for each item you drop off at Sign of the Arrow. (Limit of 10 bucks.)
- Ladue Holiday Walk - Saturday, December 3rd, Noon-3pm. Specials throughout the neighborhood, refreshments, a BIG raffle, plus visits from Santa, Fred Bird, and Louie of the St. Louis Blues.

9814 CLAYTON ROAD, ST. LOUIS, MO 63124  
SIGNOFTHEARROW.COM · 314.994.0606 · CONTACT@SIGNOFTHEARROW.COM

**GATEWAY CHAPTER OFFICERS–BOARD; EMAIL ADDRESS: [Friends@gatewayang.org](mailto:Friends@gatewayang.org)**

---

President Judy Lewis (314) 402-3197	1st Vice President-Programs Suzanne Nielsen (314)-560-4137 & Margaret Orend (314) 773-2724	2nd Vice President-Membership Janice Marsh (636) 394-1134	Secretary Hanna Evens (314) 822-7368
Treasurer Charlene Wall (636)256-0379	Newsletter Leigh Hullverson (314) 560-6188	Fundraising Becky Lape (314)606-6704 & Suzanne Nielsen (314)-560-4137	Public Relations <b>Position available</b>

**GATEWAY CHAPTER OFFICERS–COMMITTEE; EMAIL ADDRESS: [Friends@gatewayang.org](mailto:Friends@gatewayang.org)**

---

Workshops Eileen Chalk (314) 922-4324 & Kathy Scioneaux (314) 504-8784	Webmaster Janice Marsh (636) 394-1134	Sunshine Jane Normile (314) 313-8690	Philanthropy Vicki Sauter (314) 878-3079
--	---	--	--

---

**NEWSLETTER**

Needlenotes is published six (6) times a year–September, November, January, March, May, and July. The deadline for copy submission is the third Wednesday of the preceding month of the publication. Submit copy to Leigh Hullverson, Newsletter. (See phone number and email address above.)

**ADVERTISING RATES**

Advertising rates apply to one year of Needlenotes publication of six (6) issues. Rates are \$30 for business card, \$60 for ¼ page, and \$80 for a ½ page. Submit camera-ready art to the same email address as the newsletter copy listed above.

©2022 Gateway Chapter American Needlepoint Guild. ANG chapters may reproduce for guild use only; others require written permission.

Needlenotes  
Gateway Chapter of ANG  
Leigh Hullverson  
9552 Clayton Rd.  
St. Louis, MO 63124